

# Welcome Back!

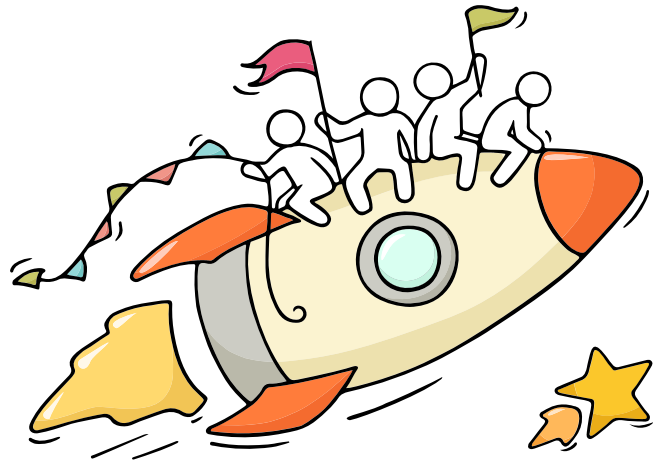
Briefing Slides for Release of N-Level Results

1. Supports available
2. PFP, DPP, JIE application briefing



# Dear students,

As we gather here today, let us all celebrate our efforts!

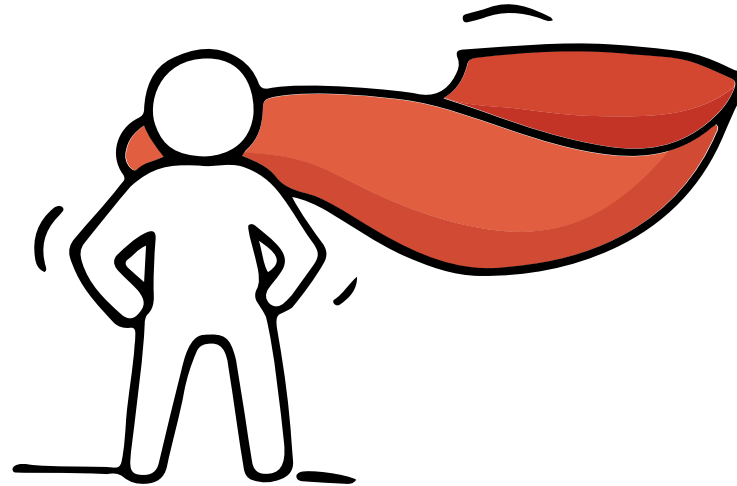


*Finally, we are going to get our results!*

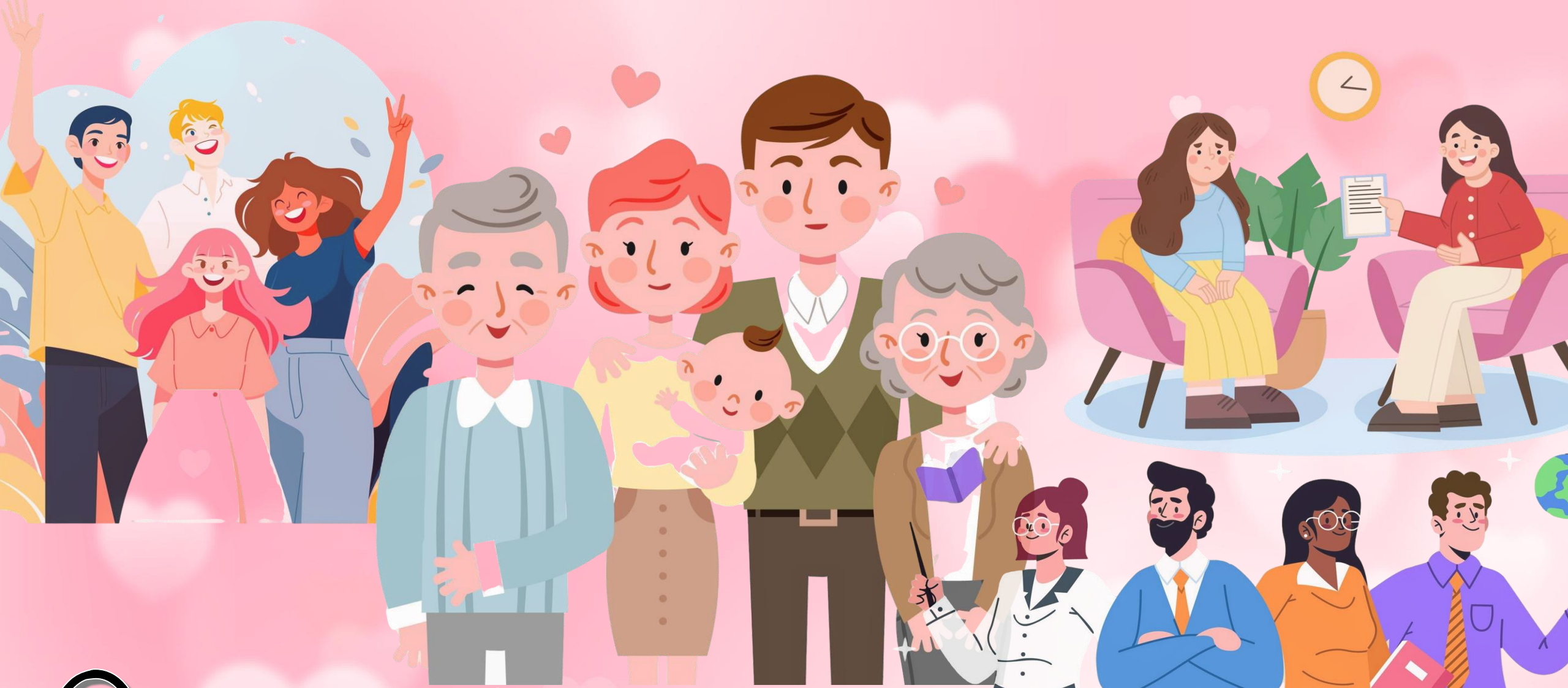


# Think about your opportunities

*Are we all going to  
be okay?*

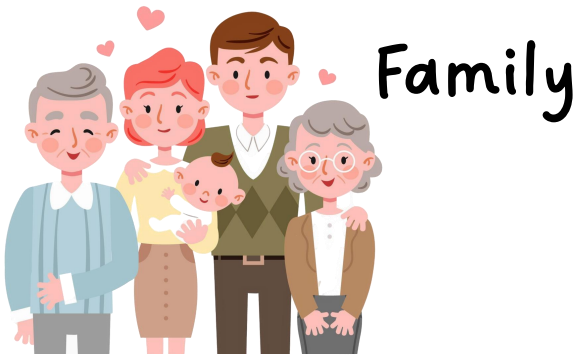


Remember that **everyone's learning journey is different**  
but **we can each have a fulfilling outcome!**



We are here for you!

# Reaching out for help is a sign of strength, not weakness.



Family



Friends



Teachers

It's **Okay**  
to Ask for  
**Help**



School  
Counsellors



## N LEVEL RESULTS RELEASE

*Feeling distressed? We can help!*

### LOOK OUT FOR SIGNS OF DISTRESS

- D** Deliberately avoiding others
- I** Increased irritability, restlessness, agitation, stress and anxiety
- S** Sending or posting moody messages on social media
- T** Talking about death or dying
- R** Reacting differently or gradually losing interest in things they used to like
- E** Eating more than usual or having a much reduced appetite
- S** Sleep pattern changes with difficulty falling asleep or oversleeping
- S** Slowing down of energy levels



### SUPPORT YOUR FRIEND

- C** **Calm them down**  
Are you ok? Calm down, take some deep breaths.
- H** **Hear them out**  
What happened?
- E** **Empathise with them**  
I would feel sad too if I were you.
- E** **Encourage seeking help**  
Is there someone you can talk to about this issue?
- R** **Refer to a trusted adult**  
Teacher, I am worried about my friend



## HELP IS AVAILABLE



**SOS** provides round the clock emotional support for those in distress, thinking of suicide or affected by suicide. This service is manned by trained volunteers.

Call: **1-767 or 1800-221-444** (24-hour helpline)  
There are also alternative avenues for emotional support through email and text messaging.

Email: [pat@sos.org.sg](mailto:pat@sos.org.sg) (Response within 48 hours)  
SOS Care Text: [www.sos.org.sg](http://www.sos.org.sg)



**eC2** is an e-Counselling Centre where you can talk to a trained counsellor about the issues you are facing, right where you are.

Youths may chat with a counsellor online at: [www.ec2.sg](http://www.ec2.sg)

Monday – Friday (Excluding Public Holidays): 10am – 12pm & 2pm – 5pm

**Community Health Assessment Team (CHAT)** CHAT provides personalised and confidential mental health checks and face-to-face consultation for youth aged 16 to 30. To speak with a youth support worker, you can:

Visit: **CHAT Hub at \*SCAPE, #05-05** or  
Call: **6493 6500/ 6501** or  
Email: [CHAT@mentalhealth.sg](mailto:CHAT@mentalhealth.sg)



**TOUCHline**  
TOUCHline is a helpline to provide youths with emotional support and practical advice.  
Call: 1800 3772252  
Monday – Friday (Excluding Public Holidays): 9am – 6pm

**mindline.sg**  
mindline.sg is an online platform that provides tools, tips and resources to help you manage your health and well-being. Explore and find out how you can improve your mental well-being and support your friends too.  
Find out more: [www.mindline.sg](http://www.mindline.sg)

# Help is readily available for you.

## Reach out to an ECG Counsellor!

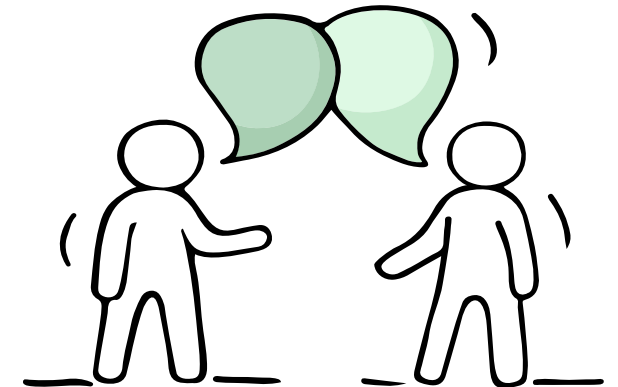
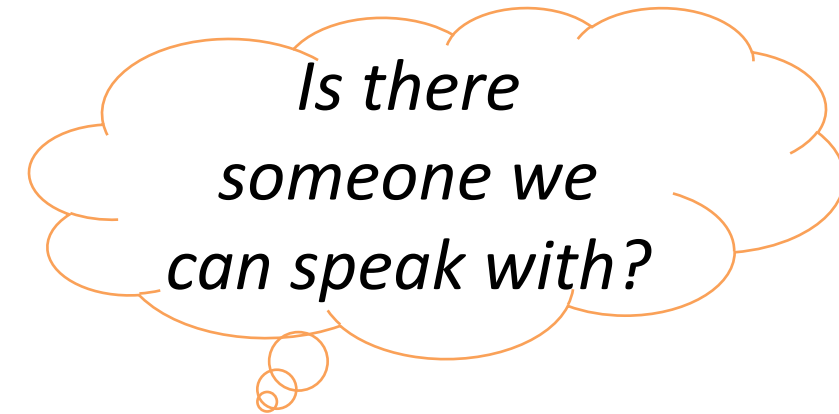
Make an appointment to speak with your ECG  
Counsellor in school.

**Ms Ming**

**Lai\_Yi\_Ming@schools.gov.sg**

Make an online or phone counselling appointment  
with the ECG Centre @ MOE (Grange Road)  
through

<https://go.gov.sg/moe-ecg-centre>



# Post-Secondary Education

Learn more about the admissions exercises and programmes

<https://moe.gov.sg/post-secondary/admissions>



Learn more about the post-secondary education institutions

<https://moe.gov.sg/post-secondary/overview>



**The N-Level is not  
the destination.**



**It is part of your  
education journey.**



# Admission Exercises

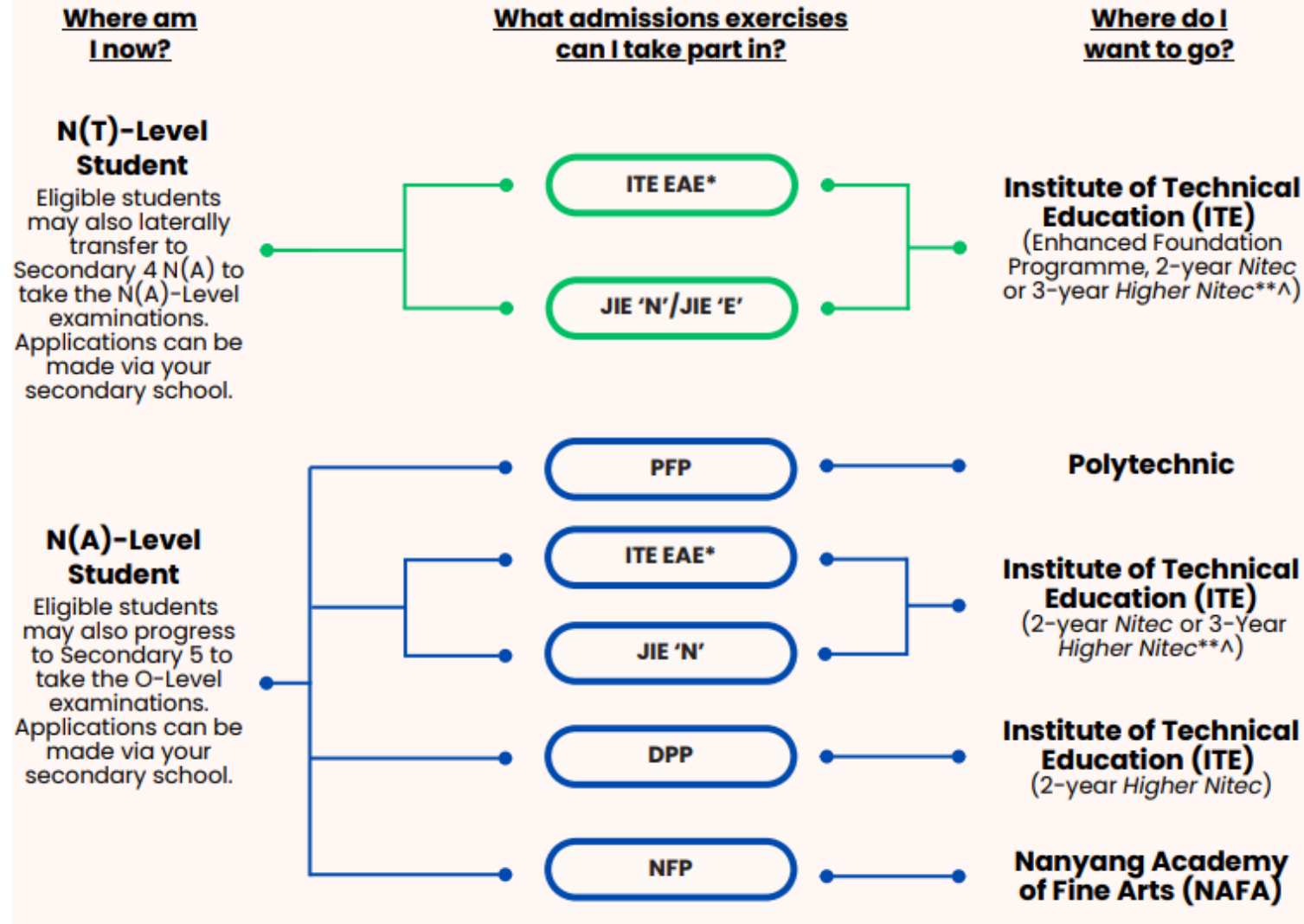
Things to note



Comp lab 1 is available today from 2.30pm –  
3.30pm for you to complete your admission exercise  
and we encourage you to do so.



# Post-Secondary Admissions Exercises for N-Level Students



<https://www.moe.gov.sg/post-secondary/admissions>



Source: A Guide to Post-Secondary Admissions Exercises

# Admissions Exercises Application Timeline



Programmes	N(A) Students	N(T) Students	Application Period	
			Dec 2024	Jan 2025
JIE 'N' 2-yr Nitec/3-yr Higher Nitec Course	✓	✓	✓	
JIE 'E' 3-yr Nitec with enhanced Nitec Foundation Programme		✓	✓	
NAFA Foundation Programme (NFP)	✓		✓	
Direct-Entry-Scheme to Poly Programme (DPP)	✓		<b>1<sup>st</sup> window of applications</b>	<b>2<sup>nd</sup> window of applications</b>
Polytechnic Foundation Programme (PFP)	✓			✓

# Joint Intake Exercise (JIE) Briefing

Admission to ITE



# Key Dates for Jan 2025 Intake Exercise

Key Activity	Period for 2-Year and 3-Year Nitec Courses, and 3-Year and 4-year Higher Nitec courses	Remarks
<b><u>1st Phase (Main Phase)</u></b>		
Application	16 Dec 2024 (2.30pm) to 19 Dec 2024 (5pm)	Apply through the Internet at <a href="https://www.ite.edu.sg">https://www.ite.edu.sg</a> with NRIC / FIN and Date of Birth. You may also apply using SingPass.
Release of Results	30 Dec 2024 at 9am	Check results at <a href="https://istudent.ite.edu.sg">https://istudent.ite.edu.sg</a> with web ID and password
Acceptance of Course Offer Period	30 Dec 2024 to 3 Jan 2025	Accept course offer at <a href="https://istudent.ite.edu.sg">https://istudent.ite.edu.sg</a> with web ID and password
<b><u>2nd Phase (Late Application/Appeal Phase)</u></b>		
Application	30 Dec 2024 to 3 Jan 2025	Apply through the Internet at <a href="https://istudent.ite.edu.sg">https://istudent.ite.edu.sg</a> with NRIC / FIN and Date of Birth. You may also apply using SingPass.
Release of Results	10 Jan 2025 at 9am	Check results at <a href="https://istudent.ite.edu.sg">https://istudent.ite.edu.sg</a> with web ID and password
Acceptance of Course Offer Period	10 Jan 2025 to 12 Jan 2025	Accept course offer at <a href="https://istudent.ite.edu.sg">https://istudent.ite.edu.sg</a> with web ID and password
<b><u>3rd Phase (Final Top-up Phase)</u></b>		
Application	1 <sup>st</sup> Top-up Phase Application - 10 Jan to 17 Jan 2025 2 <sup>nd</sup> Top-up Phase Application - 23 Jan to 7 Feb 2025	Apply through the Internet at <a href="https://istudent.ite.edu.sg">https://istudent.ite.edu.sg</a> with NRIC / FIN and Date of Birth. You may also apply using SingPass.
Release of Results	1 <sup>st</sup> Top-up Phase - 14 Jan to 23 Jan 2025 2 <sup>nd</sup> Top-up Phase - 23 Jan to 13 Feb 2025	Check results at <a href="https://istudent.ite.edu.sg">https://istudent.ite.edu.sg</a> with web ID and password
Acceptance of Course Offer Period	1 <sup>st</sup> Top-up Phase - 14 Jan to 23 Jan 2025 2 <sup>nd</sup> Top-up Phase - 23 Jan to 13 Feb 2025	Accept course offer at <a href="https://istudent.ite.edu.sg">https://istudent.ite.edu.sg</a> with web ID and password

Jan 2025 Intake Term Commencement Date: **13 Jan 2025**

JUST-IN-TIME INFORMATION ON JIE APPLICATION (JAN 2025 INTAKE)

# Information For Students on Key Dates for Jan 2025 intake

1. All N(A)\* /N(T) school leavers are encouraged to submit an application during the **1<sup>st</sup> Phase (Main Phase)** between **16 Dec 2024 (2.30pm) to 19 Dec 2024 (5pm)**. Application results for the 1<sup>st</sup> Phase will be released on **30 Dec 2024 at 9am**.
2. If you wish to appeal, please accept the course offered **before** applying in the **2<sup>nd</sup> Phase (Late Application/Appeal Phase)** between **30 Dec 2024 to 3 Jan 2025**. The application results for the 2<sup>nd</sup> Phase will be known on **10 Jan 2025 at 9am**.
3. Unsuccessful applicants can appeal under the **3<sup>rd</sup> Phase (Final Top-up Phase)** between **10 Jan to 17 Jan 2025 and 23 Jan to 7 Feb 2025** for courses with vacancies. The application results for the 3<sup>rd</sup> Phase will be known between **14 Jan to 23 Jan 2025** and **23 Jan to 13 Feb 2025**.

\*N(A) students progressing to ITE

For further enquiries, N-Level school leavers can contact  
ITE Hotline: 1800-2222-111

# Key Pointers for Students on ITE's Joint Intake Exercise (JIE)

ALL students in N(T) and N(A) students (who are not progressing to 5N(A) or repeating 4N(A)) are eligible for JIE.  
Those who were unsuccessful in EAE are also eligible for JIE.

Participation in JIE Main Phase is key to securing a place in ITE!

Use all 12 JIE choices wisely, as competition for 3-year Higher Nitec courses is keen!

Do consult your teachers / ECG counsellors to help you make your choices!

Do use the Last Aggregate Score (LAS) published in ITE's admission portal to help you make your course choices.

If you have received an additional letter, then you are eligible for the Enhanced Foundation Programme (EFP).

If you are eligible for EFP, make sure you apply for both the EFP and the 2-year Nitec/3-year Higher Nitec!

The EFP helps to build the necessary literacy and numeracy foundations that will enable you to successfully complete your course!

If you are counter-offered a course, accept it first before appealing for another course you may be more interested in!



## STEP-BY-STEP INFORMATION FOR JIE APPLICATION

# Online Application for


2-Year Nitec and 3-Year Higher Nitec Courses


3-Year Nitec/4-year Higher Nitec Course with EFP

(for N(T) students with 0, 1 "N" pass)

1. Go to <https://www.ite.edu.sg>.

2. Click  icon.

3. Under JIE 'N', click  icon to link to the application website

Under JIE 'E', click  icon to link to the application website

4. At the application website:

- a) Enter NRIC / FIN and Date of Birth to start application. You may also apply using SingPass.
- b) Upon completion of application, applicants will receive their **web ID** and password.

## STEP-BY-STEP INFORMATION FOR JIE APPLICATION

# Checking of Posting Results/Accept Course Offer

2-Year Nitec and 3-Year Higher  
Nitec Courses

3-Year Nitec/4-year Higher Nitec  
Course with EFP  
(for N(T) students with 0, 1 "N" pass)

1. Go to <https://istudent.ite.edu.sg>.
2. Enter **web ID** and password.
3. Click '**Self-Service**' followed by '**Student Admission**' followed by '**View Application Results**' to view the application results and to accept course offer.

The above steps applies to all phases (refer to Slide 11 for dates).  
For more details, please refer to ITE website.

## RESOURCES FOR STUDENTS

# Additional Information For Students

Should you require further advice or assistance in your applications or future plans, please contact your teachers and/or ECG Counsellor.


For further inquiries, you may refer to the following hotlines and links for more information and advice on further education:

Institute of Technical Education (ITE)	
ITE Hotline (for ITE admissions and courses)	1800 2222 111 <a href="mailto:training@ite.edu.sg">training@ite.edu.sg</a>
ECG Centre @ MOE	
e-Appointment link	<a href="https://go.gov.sg/moe-ecg-centre">https://go.gov.sg/moe-ecg-centre</a>

## RESOURCES FOR STUDENTS

# Additional Information For Students

The information listed in the table below will help you to make an informed decision on which choice of courses you could consider applying at ITE.

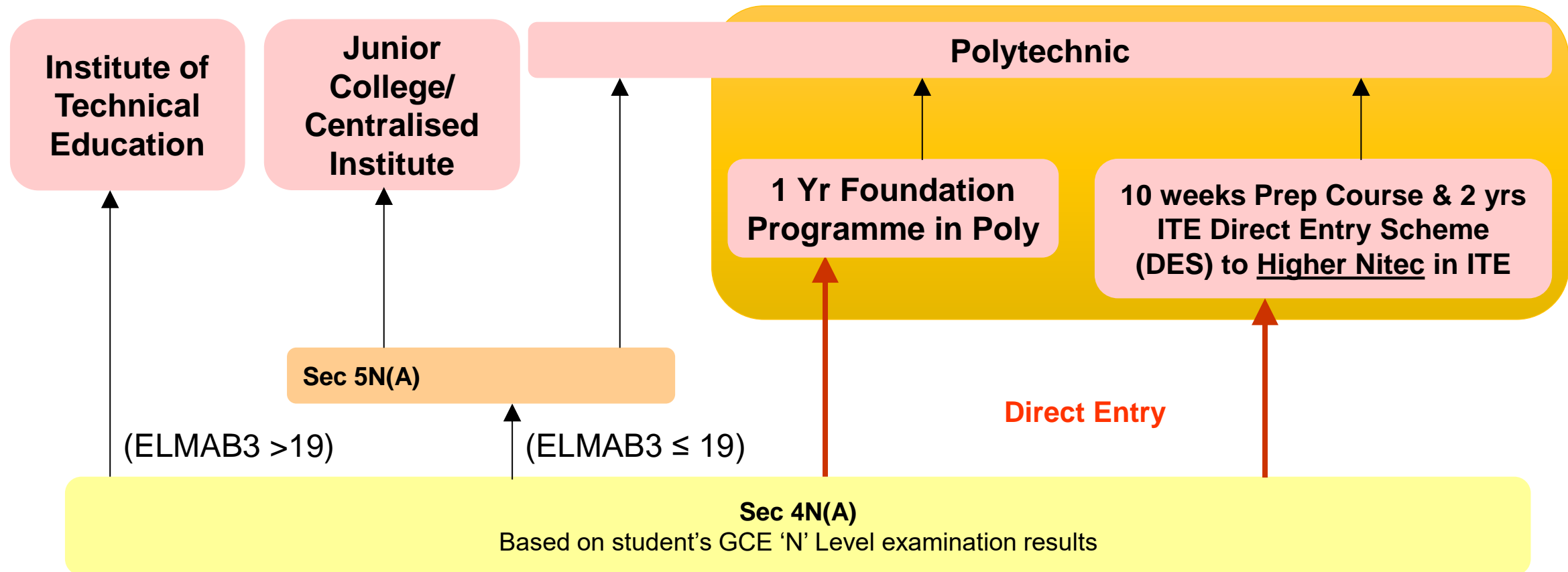
S/N	Information	Attachment/Link
1	ITE Factsheet 2024	 2024 JIEN Factsheet
2	ITE Course Booklet 2025	<a href="https://www.ite.edu.sg/courses/full-time-courses/download-ite-course-booklet">https://www.ite.edu.sg/courses/full-time-courses/download-ite-course-booklet</a>
3	Information on Progression Opportunities (From <i>Nitec</i> Courses to <i>Higher Nitec</i> and Technical diplomas)	<a href="https://www.ite.edu.sg/admissions/full-time-courses/nitec-and-3-year-higher-nitec/progression-opportunities">https://www.ite.edu.sg/admissions/full-time-courses/nitec-and-3-year-higher-nitec/progression-opportunities</a>
4	Information on Progression Opportunities (from <i>Higher Nitec</i> courses to diploma courses)	<a href="https://www.ite.edu.sg/admissions/full-time-courses/higher-nitec/academic-progression">https://www.ite.edu.sg/admissions/full-time-courses/higher-nitec/academic-progression</a>



## Pathways for Sec 4 N(A)

# Pathways for Sec 4N(A)

Sec 4N(A) students who do well in their 'N' Levels can either join the Polytechnic Foundation Programme or ITE's Higher National ITE Certificate (*Higher Nitec*) course directly.





**Pathway 1**  
**JIE Application to ITE**  
**(as shared previously)**



**Pathway 2:  
Progress to Sec 5 N(A)**



# Pathways for Sec 4N(A)

## **Pathway 2: Sec 5 N(A)**

### **Criteria**

- EL+Maths+Best 3 Subjects (ELMAB3)  $\leq$  19 points (excluding Bonus points); and
- Subjects used in computation for ELMAB3  $\leq$  Grade 5



## Pathway 3: Polytechnic Foundation Programme (PFP)

## Pathway 3:

## Essential Things You Need to Know

Sent to parents/guardians via PG

### 1. What is the PFP?

- A foundation year at the polytechnics that:
  - Prepares well-performing Sec 4N(A) students for entry into relevant polytechnic diploma courses
  - Serves as an alternative to Sec 5
- Conducted over two academic semesters at the polytechnics
- Students must pass all PFP modules in order to progress to their respective, pre-selected diploma courses.

### 2. Am I eligible for PFP 2025?

You are eligible for the PFP if you:

- Sat for GCE N-Level exams as a school candidate in 2024
- Have obtained an ELMAB3 aggregate of 12 points or less (before deduction of CCA bonus points)
- Met subject-specific entry requirements as listed on the PFP portal

**If you can check all 3 boxes above, you're eligible!**  
 (Note: Eligibility does not guarantee you a place in a PFP course)

If you had offered GCE O-Level examination subjects in 2024, you may refer to this table for the equivalent grade to compute your ELMAB3 aggregate:

GCE 'O' Level Grade	Converted Grade
A1-B3	1
B4-C6	2
D7	3
E8	4

### 3. How do I apply?

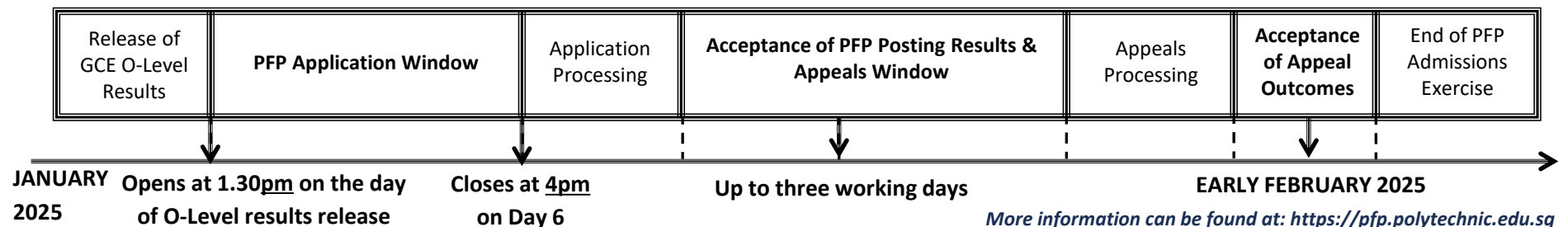
- Upon release of the GCE O-Level results, all PFP-eligible students will receive Form P containing a PFP PIN that allows them to apply for the PFP at this [link](#).
- You may select up to five course choices.
- Remember to provide updated contact details in your application to allow the polytechnics to contact you if necessary.  
 (Note: You should continue to attend Sec 5 from 2 January 2025 while applying for PFP.)

### 4. How will I be informed of the outcome?

- You should log in to the PFP portal to check your application outcomes on the day of PFP posting results release.
- You will then have to indicate if you wish to accept/reject/appeal the offer.
- If you do not select any option, your offer will become invalid and you will be required to continue with your classes in Sec 5/DPP.  
 (Note: If your appeal is successful, your original offer will be voided, regardless of whether you accept the new PFP offer.)

### 5. What happens next?

- If you accept your offer, you will receive an enrolment package from the polytechnic in February/March 2025.
- The PFP year will start in April 2025.



# Direct Pathways for Sec 4N(A)

## Polytechnic Foundation Programme (PFP)

A foundation year at the polytechnics that:

- Prepares well-performing Sec 4N(A) students for entry into relevant polytechnic diploma courses
- Serves as an alternative to Sec 5

Conducted over two academic semesters at the polytechnics

Students must pass all PFP modules in order to progress to their respective, pre-selected diploma courses.

# Direct Pathways for Sec 4N(A)

## Criteria for Polytechnic Foundation Programme (PFP)

### Am I eligible for PFP 2025?

You are eligible for the PFP if you:

- Sat for GCE N-Level exams as a school candidate in 2024
- Have obtained an ELMAB3 aggregate of **12 points or less** (before deduction of CCA bonus points)
- Met subject-specific entry requirements as listed on the PFP portal



**If you can check all 3 boxes above, you're eligible!**

*(Note: Eligibility does not guarantee you a place in a PFP course)*

If you had offered \*\*GCE O-Level examination subjects in 2024, you may refer to this table for the equivalent grade to compute your ELMAB3 aggregate:

GCE 'O' Level Grade	Converted Grade
A1-B3	1
B4-C6	2
D7	3
E8	4

More details can be obtained in the polytechnic website :  
(<https://pfp.polytechnic.edu.sg>)

**\*\*2024 GCE O-Level result will be released in Jan 2025.**

## Essential Things You Need to Know

### Pathway 2:

Application



#### 1. What is the PFP?

- A foundation year at the polytechnics that:
  - Prepares well-performing Sec 4N(A) students for entry into relevant polytechnic diploma courses
  - Serves as an alternative to Sec 5
- Conducted over two academic semesters at the polytechnics
- Students must pass all PFP modules in order to progress to their respective, pre-selected diploma courses.

#### 2. Am I eligible for PFP 2025?

You are eligible for the PFP if you:

- Sat for GCE N-Level exams as a school candidate in 2024
- Have obtained an ELMAB3 aggregate of 12 points or less (before deduction of CCA bonus points)
- Met subject-specific entry requirements as listed on the PFP portal

✔ **If you can check all 3 boxes above, you're eligible!**  
 (Note: Eligibility does not guarantee you a place in a PFP course)

If you had offered GCE O-Level examination subjects in 2024, you may refer to this table for the equivalent grade to compute your ELMAB3 aggregate:

GCE 'O' Level Grade	Converted Grade
A1-B3	1
B4-C6	2
D7	3
E8	4

#### 3. How do I apply?

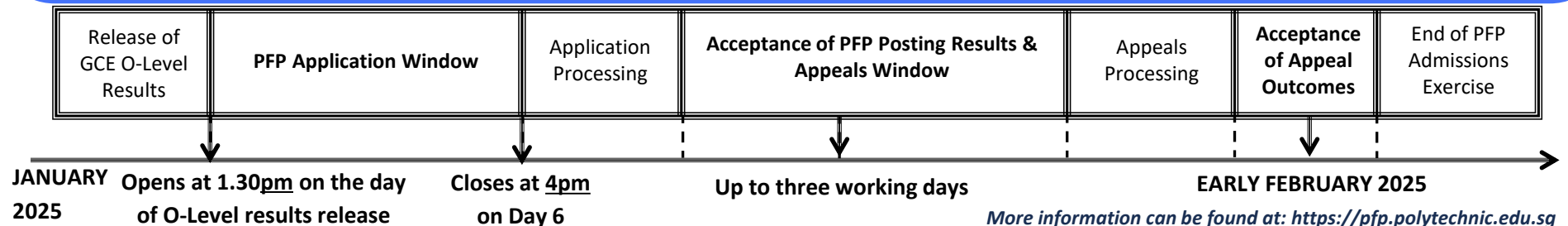
- Upon release of the GCE O-Level results, all PFP-eligible students will receive Form P containing a PFP PIN that allows them to apply for the PFP at this [link](#).
- You may select up to five course choices.
- Remember to provide updated contact details in your application to allow the polytechnics to contact you if necessary.  
 (Note: You should continue to attend Sec 5 from 2 January 2025 while applying for PFP.)

#### 4. How will I be informed of the outcome?

- You should log in to the PFP portal to check your application outcomes on the day of PFP posting results release.
- You will then have to indicate if you wish to accept/reject/appeal the offer.
- If you do not select any option, your offer will become invalid and you will be required to continue with your classes in Sec 5/DPP.  
 (Note: If your appeal is successful, your original offer will be voided, regardless of whether you accept the new PFP offer.)

#### 5. What happens next?

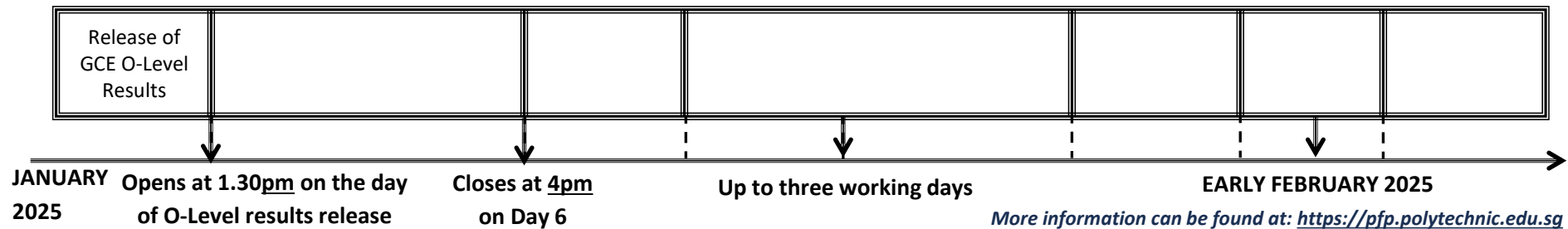
- If you accept your offer, you will receive an enrolment package from the polytechnic in February/March 2025.
- The PFP year will start in April 2025.



# Direct Pathways for Sec 4N(A)

## PFP Application timeline

(Starts in Jan 2025 upon release of GCE O-Level result)



# Direct Pathways for Sec 4N(A)

Important note for PFP:

Students who are only interested in applying for the PFP should **first progress to Sec 5N(A)**, even if they meet the PFP eligibility criteria based on their GCE N(A)-Level results in December 2024. They may then apply for the PFP upon release of the GCE O-Level results in January 2025. If their application is **successful**, they will withdraw from Sec 5N(A) by the end of January 2025.

All PFP-bound students are required to attend Sec 5N(A) classes in their secondary schools up till the **last Friday of January 2025, i.e. 31 January 2025**.





**Pathway 4:**  
Direct-Entry-Scheme to Polytechnic Programme  
(DPP)

# DIRECT-ENTRY-SCHEME TO POLYTECHNIC PROGRAMME (DPP)

## 5 Things You Need to Know

Sent to parents/guardians via PG

### 1. What is the DPP?

- Prepares Sec 4N(A) students for progression into selected polytechnic diploma courses via a 2-year *Higher Nitec* programme at ITE, and a 10-week DPP preparatory course
  - Serves as an alternative to Sec 5
- DPP students who meet the minimum qualifying GPA score are guaranteed a place in a polytechnic diploma course mapped to the *Higher Nitec* course. (Refer to <https://www.ite.edu.sg/admissions/full-time-courses/higher-nitec-dpp> for course mapping.)
- About 1,200 places offered across 18 *Higher Nitec* courses

### 2. Am I eligible for DPP?

- Sec 4N(A) student who has sat for GCE N-Level exams in 2024
- Obtained ELMAB3 aggregate of 19 points or less (before deduction of CCA bonus points)
- Meet course-specific entry requirements
- If you can check all 3 boxes above, you're eligible!** (Note: Eligibility does not guarantee placement.)

If you have offered GCE O-Level examination subjects in 2024, you may refer to this table for the equivalent grade to compute your ELMAB3 aggregate:

GCE O-Level Grade	Converted Grade
A1-B3	1
B4-C6	2
D7	3
E8	4

### 3. How do I apply?

- Upon release of the GCE N-Level results, all DPP-eligible students may apply for DPP *Higher Nitec* courses via the ITE website (<https://www.ite.edu.sg>).
- You may select up to 12 course choices.
- Remember to provide updated contact details in your application so that ITE can contact you if necessary.

### 4. How will I know the outcome?

- You should check your DPP posting results online on the morning of the release of the DPP posting results.
- You will then have to indicate if you wish to accept/reject/appeal the offer.
- Your offer will be void if you do not accept the offer by the stipulated date. You will be required to continue with your classes in Sec 5, or with your *Nitec / Higher Nitec* course if your application via JIE 'N' is successful

### 5. What happens next?

Upon accepting your DPP offer, you will attend a 10-week DPP preparatory programme starting from Jan 2025.

Release of GCE N-Level Results	DPP Application	Application Processing	Release of DPP Posting Results	Accept/Reject/Appeal	Release of GCE O-Level Results	DPP Application for newly-eligible students	Application Processing	Release of DPP Posting Results	End of DPP Admissions Exercise
--------------------------------	-----------------	------------------------	--------------------------------	----------------------	--------------------------------	---------------------------------------------	------------------------	--------------------------------	--------------------------------

December 2024

January 2025

Early February 2025

More information can be found at: <https://www.ite.edu.sg/admissions/full-time-courses/higher-nitec-dpp>

# Direct Pathways for Sec 4N(A)

## Pathway 4: Direct-Entry-Scheme to Polytechnic Programme (DPP)

- ▶ Prepares Sec 4N(A) students for progression into selected polytechnic diploma via a 2-year *Higher Nitec* programme at ITE, and a 10-coursesweek DPP preparatory course
  - Serves as an alternative to Sec 5
- ▶ DPP students who meet the minimum qualifying GPA score are guaranteed a place in a polytechnic diploma course mapped to the *Higher Nitec* course. (Refer to <https://www.ite.edu.sg/admissions/full-time-courses/higher-nitec-dpp> for course mapping.)
- ▶ About 1,200 places offered across 18 *Higher Nitec* courses

# Direct Pathways for Sec 4N(A)

## Criteria for Direct-Entry-Scheme-to-Polytechnic Programme (DPP)

### Am I eligible for DPP?

- Sec 4N(A) student who has sat for GCE N-Level exams in 2024.
- Obtained ELMAB3 aggregate of 19 points or less (before deduction of CCA bonus points)-
- Meet course-specific entry requirements



**If you can check all 3 boxes above, you're eligible!** (Note: Eligibility does not guarantee placement.)

If you have offered GCE O-Level examination subjects in 2024, you may refer to this table for the equivalent grade to compute your ELMAB3 aggregate:

<i>GCE O-Level Grade</i>	<i>Converted Grade</i>
A1-B3	1
B4-C6	2
D7	3
E8	4

**\*\*2024 GCE O-Level result will be released in Jan 2025.**

# DIRECT-ENTRY-SCHEME TO POLYTECHNIC PROGRAMME (DPP)

## 5 Things You Need to Know

### 1. What is the DPP?

- Prepares Sec 4N(A) students for progression into selected polytechnic diploma courses via a 2-year *Higher Nitec* programme at ITE, and a 10-week DPP preparatory course
  - Serves as an alternative to Sec 5
- DPP students who meet the minimum qualifying GPA score are guaranteed a place in a polytechnic diploma course mapped to the *Higher Nitec* course. (Refer to <https://www.ite.edu.sg/admissions/full-time-courses/higher-nitec-dpp> for course mapping.)
- About 1,200 places offered across 18 *Higher Nitec* courses

### 2. Am I eligible for DPP?

- Sec 4N(A) student who has sat for GCE N-Level exams in 2024
- Obtained ELMAB3 aggregate of 19 points or less (before deduction of CCA bonus points)
- Meet course-specific entry requirements
- If you can check all 3 boxes above, you're eligible!** (Note: Eligibility does not guarantee placement.)

If you have offered GCE O-Level examination subjects in 2024, you may refer to this table for the equivalent grade to compute your ELMAB3 aggregate:

GCE O-Level Grade	Converted Grade
A1-B3	1
B4-C6	2
D7	3
E8	4

### 3. How do I apply?

- Upon release of the GCE N-Level results, all DPP-eligible students may apply for DPP *Higher Nitec* courses via the ITE website (<https://www.ite.edu.sg>).
- You may select up to 12 course choices.
- Remember to provide updated contact details in your application so that ITE can contact you if necessary.

### 4. How will I know the outcome?

- You should check your DPP posting results online on the morning of the release of the DPP posting results.
- You will then have to indicate if you wish to accept/reject/appeal the offer.
- Your offer will be void if you do not accept the offer by the stipulated date. You will be required to continue with your classes in Sec 5, or with your *Nitec / Higher Nitec* course if your application via JIE 'N' is successful

### 5. What happens next?

Upon accepting your DPP offer, you will attend a 10-week DPP preparatory programme starting from Jan 2025.

Application



Release of GCE N-Level Results	DPP Application	Application Processing	Release of DPP Posting Results	Accept/Reject/Appeal	Release of GCE O-Level Results	DPP Application for newly-eligible students	Application Processing	Release of DPP Posting Results	End of DPP Admissions Exercise
--------------------------------	-----------------	------------------------	--------------------------------	----------------------	--------------------------------	---------------------------------------------	------------------------	--------------------------------	--------------------------------

December 2024

January 2025

Early February 2025

More information can be found at: <https://www.ite.edu.sg/admissions/full-time-courses/higher-nitec-dpp>

# Direct Pathways for Sec 4N(A)

DPP(Phase 1) Application timeline:

Release of GCE N-Level Results	DPP Application	Release of DPP Posting Results	Accept/Reject/ Appeal	Release of appeal results	Attend DPP Prep Programme
16 Dec (2pm)	16 Dec (2.30pm)   19 Dec (5pm)	20 Dec (2pm)	20 Dec (2pm)   26 Dec (11.59pm)	30 Dec (9am)	<b>13 Jan (Mon)</b>

DPP(Final Phase) Application timeline (**Tentative**):

Release of O-Level Results	Phase 2 Application	Release of final phase result	Start of Higher Nitec Term
10 Jan 2025 (Tentative)	10 Jan (2pm)   14 Jan (11.59pm)	17 Jan (9am)	1 Apr

# Important Information for DPP

## ➤ DPP Enrolment & Matriculation

- Students who accept their DPP offers are required to complete their enrolment by 13 January 2025 (Mon).
- The 10-week DPP preparatory programme will commence on 13 January 2025.

### Note:

Students who have a confirmed place in DPP need not report to school on 2 Jan 2025 for Secondary 5.

Students who do not have a confirmed place in DPP or Nitec programme should report to FMS(S) on 2 Jan 2025 for Secondary 5, if they are eligible for Sec 5NA.

# Important Information for DPP & PFP

One option for students who are interested in both the PFP and DPP is to **first progress to Sec 5N(A) and then apply for both the PFP and DPP** upon release of the GCE O-Level examination results in January 2025. Students who are offered a place in both the PFP and DPP **may only accept one course offer**. Students who accept both offers will have both offers **voided**. If their application to either the PFP or DPP is successful, they will withdraw from Sec 5N(A) by the end of January 2025.

For students who have already applied for and accepted their DPP offer prior to the release of the GCE O-Level examination results, their secondary school will contact them to collect the PFP eligibility form (Form P) if they are eligible for PFP after the release of the GCE O-Level results. Students who decide to apply for and accept their PFP offer in January 2025 will need to **withdraw from the DPP course**. Applicants can apply for a refund of their DPP enrolment fees, subject to ITE's approval.





Ministry of Education  
SINGAPORE